

ATV Minnesota

"Your Voice For ATV Recreation in Minnesota"

December 27, 2020

Newsletter

Matthew Lourey State Trail

About the Trail

The Matthew Lourey State Trail spans over 80 miles and is multi-use. It winds through portions of the Nemadji, St. Croix and Chongwatana state forests. The trail honors the memory and military service of Matthew Lourey.

Spring, Summer and Fall

There are no bridges at Keene Creek, Ox Creek or Kettle River crossings.

All trails in the Nemadji, St. Croix and Chongwatana state forests are open for **hiking, mountain biking and horseback riding**.

Portions of the Matthew Lourey State Trail are open to **all-terrain vehicles (ATVs) and off-highway motorcycles (OHMs)**.

Some trails and roads in the Nemadji, St. Croix and Chongwatana state forests are open to **ATVs, OHMs and off-road vehicles (ORVs)**. Riding is allowed only on trails and roads signed as open.

Emergency Information

For emergencies, call 911.
Non-emergency Pine County sheriff's number: 320-629-8380

Your Location
Gafvert Campground
5 Net Lake Road
Holyoke, MN

Latitude/longitude:
46.405158, -92.442759

Nearby Hospital
Mercy Hospital
4572 County Hwy. 61
Moose Lake, MN 55767
218-485-4481

Be Alert for Others

Use caution when approaching narrow or winding sections of trail.

Adjust speed based on trail conditions.

Winter

Trail is packed and groomed when enough snow has fallen. Please do not follow the groomer. Give trails time to set in the cold.

All trails in the Nemadji, St. Croix and Chongwatana state forests are open to **snowmobiles**.

The Matthew Lourey State Trail is open to ATVs from Pine County Road 172 in St. Croix State Forest to Carlton County at Granzow Road in Nemadji State Forest.

Some trails and roads in the Nemadji, St. Croix and Chongwatana state forests are open to **ATVs, OHMs and ORVs**. Riding is allowed only on trails and roads signed as open.

ATV Operators
When the temperature is warmer than 30°F, please stay off the groomed trail.

Rules to Know

Share the Trail

- Yield to horses.
- Stay to the right, unless safely passing.

Be Respectful

- Carry out all trash.
- Stay on the trail.

Horse Pass

- A trail pass is required for horseback riders over the age of 16.

OHV Registration and Pass

- Minnesota OHVs must be registered.
- Non-resident OHV operators require a trail pass.

Snowmobile Registration

- Snowmobiles must be registered.

More Information

- Trail users are responsible for knowing the rules.
- Find details at www.mndnr.gov/trails.

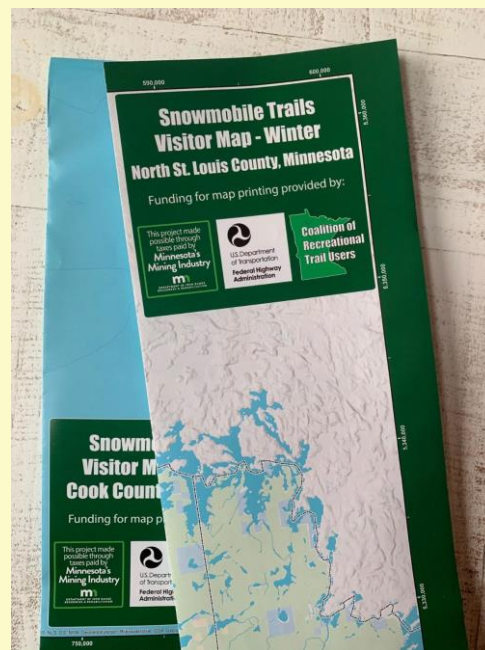
Minnesota Department of Natural Resources

New Kiosks & Signs On Groomed Dual-Use Trails

(photos above & below)

Thanks to the work of the ATV Minnesota Winter Riding Committee, partnering with the Minnesota DNR and MnUSA, there is new signage related to the special rules regarding ATV use on some popular, groomed, dual-use trails.

The Minnesota DNR has installed two 4x8 ft. kiosk signs on the Matthew Lourey Trail, one in the Gafvert Campground on the north, and one on the south side near Tamarack Road. Details on rules regarding ATV winter use include a thermometer, highlighting the importance of riding






New Printed Maps

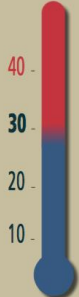
only when the air temperature is 30 degrees or colder (see below).

Winter

Trail is packed and groomed when enough snow has fallen.
Please do not follow the groomer. Give trails time to set in the cold.

-  All trails in the Nemadji, St. Croix and Chengwatana state forests are open to **snowmobiles**.
-  The Matthew Lourey State Trail is open to **ATVs** from Pine County Road 173 in St. Croix State Forest to Carlton County at Granzow Road in Nemadji State Forest.
-  Some trails and roads in the Nemadji, St. Croix and Chengwatana state forests are open to **ATVs, OHMs and ORVs**. Riding is allowed only on trails and roads signed as open.

ATV Operators
When the temperature is warmer than 30°F, please stay off the groomed trail.




New Trail Signs Add To Rider Education

In addition, the DNR is moving forward with new Trail Signs recommended by ATVMN and MnUSA. It has purchased 10

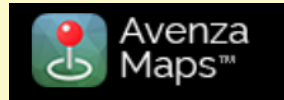
signs 12x18 in. in size and 20 12x12 in. stickers. They will be installed in the Nemadji State Forest on the Matthew Lourey, Gandy Dancer, and St. Croix trails. They set expectations that the trails are "shared," and that ATV use on groomed trails should be only when

For Sledheads

ATV Minnesota members who ride sleds will be glad to know that maps showing all the Grant-In Aid snowmobile trails, club trails and other legal routes for snowmobiles in the Superior National Forest are hot off the press and now available at many locations. Great for ride planning, the Snowmobile Trail Visitor Maps were created by the Coalition of Recreational Trail Users (CRTU). Unfolded they are 2 ft. 3 in. by 3 ft. 3 in. Spread them out on a table and you can plan your ride on Grant-In-Aid Snowmobile Trails and the roads and other routes open to snowmobiles. One sheet shows Cook County on one side and Lake County on the reverse. A second sheet shows North St. Louis on one side, South St. Louis on the reverse. Printed maps are available from the Minnesota DNR St. Paul office, and DNR Area Offices in Tower and Two Harbors, as well as chamber offices in Ely, Orr, International Falls, Two Harbors, Silver Bay and Grand Marais, and the Iron Range Tourism Bureau in Eveleth. Maps are also available at the Superior National Forest office in Duluth, and the District Offices in Ely, Cook, Aurora, Tofte and Grand Marais.

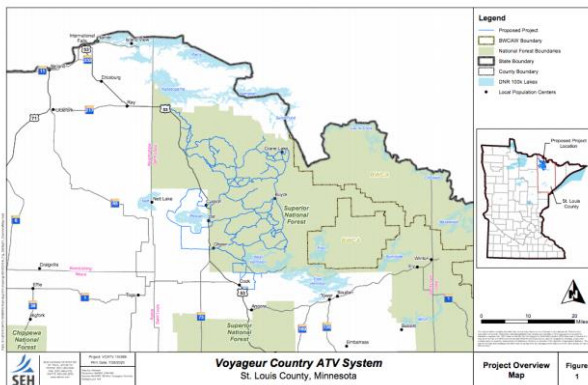


temps are 30°F and below. The signs are brown, aligning with the background color ATVMN is envisioning for the future of "information" signs in our state, moving away from red, considered nationally as a "warning" color.



4 Snowmobile Maps Are Also Available In Digital Form On The Avenza App Map Store

The maps have been available in digital form for 2 years from the Avenza App map store. There are 4 maps covering Lake County, Cook County, North St. Louis County and South St. Louis County. They are geo-referenced, showing riders their location on a smartphone or table. The technology will work without cell coverage. To see the digital maps, go to avenza.com or your app store, and download the app. Then go to the Map Store and search for the maps you need. Map titles are: "CRTU Superior National Forest Winter: (County Name)." The CRTU mapping project was made possible through a partnership with the Superior National Forest, Minnesota DNR Parks & Trails, and the three Counties. Major funding was provided by Yamaha and Polaris grants, and taxes from the Minnesota Mining Industry.



DNR Extends Deadline For Public Comments On Voyageur Country Trail System

There is still time to comment! As a result of a distribution error, the Minnesota DNR is extending the time to comment on the proposed project by 30 days. All written comments must now be received by Friday, January 15, 2021, at 4:30 p.m. The extension is for comments on an Environmental Assessment Worksheet (EAW) for a proposal to expand and improve the Voyageur Country All-Terrain Vehicle System in northern St. Louis County.

For more details on the project and how to comment, see the ATV Minnesota newsletter dated November 27, at atvam.org.

Trail Guidebooks, Blueprints And More Available From U.S. Forest Service



From Christopher Douwes,
Community Planner,
Transportation Alternatives /
Recreational Trails Program
Federal Highway Administration

Christopher Douwes is one of the OHV industry's best advocates in Washington,

D.C. He always attends the NOHVCC conference or does a live video presentation with all the latest news from the Federal Highway Administration (FHWA), especially regarding the Recreational Trails Program (RTP). A recent email from him to the Minnesota DNR and forwarded to ATVMN lists OHV publications available from the U.S. Forest Service, some which ATVMN clubs might be interested in ordering and adding to their trail-building toolbox. Many are also available to review and read online, by copying the publication title and inserting it in your computer's browser.

Hello FHWA, State, and Federal agency trail contacts,

FHWA's report center warehouse is looking to reduce inventory. Included in the inventory are many U.S. Forest Service publications on planning, designing, and managing trails. Several deal with accessibility issues. With the lack of in-person conferences this year, we haven't had opportunities to promote these trail publications as we have in the past.

Please feel free to order as many of these publications as you think you might need over the next year or so.

You can see the available in-print publications at https://www.fhwa.dot.gov/environment/recreational_trails/publications/trailpub.cfm. Although we're not changing our webpage, I asked the report center to temporarily allow people to order more than 1 copy. HOWEVER: One publication for which we're keeping a restriction is everybody's favorite, the Trail Construction and Maintenance Notebook. The inventory for that is much lower. If you want multiple copies of those, the request has to come through me.

Among publications that have a lot of stock:

Publication #

Title

1223-2806P-MTDC

Accessibility Guidebook for Outdoor Recreation and Trails

1123-2M07-MTDC

Accessibility and Recreation Projects (DVD)

1223-2309P-MTDC

Accessible Trail Surfaced With Resin-Based Pavement: A Case Study

1123-2M18-MTDC

Designing Sustainable Off-Highway Vehicle Trails: An Alaska Trail Manager's Perspective

0723-2816-MTDC

Equestrian Design Guidebook for Trails, Trailheads, and Campgrounds

1523-2812-MTDC

Forest Service Trails Accessibility Guidelines (FSTAG) Pocket Version

1523-2811-MTDC

Forest Service Outdoor Recreation Accessibility Guidelines (FSORAG) Pocket Version

1223-2316P-MTCD

Innovative Design for a Short-Span Timber All-Terrain Vehicle Trail Bridge

1223-2310P-MTCD

Innovative Foundations for Boardwalks and Viewing Platforms

1023-2M06-MTCD

Introduction to Mechanized Trail Equipment

1623-2M08-MTCD

Leave No Trace for Stock Video Series

1023-2808-MTDC

Locating Your Trail Bridge for Longevity

0567-2338-MTDC

Recreation, Safety, and Health: Tech Tips

2023-2805P-NTDP

Sustainable Trail Bridge Design (Errata sheet) NEW: I highly recommend it.

1623-3801-MTDC

Trail Fundamentals and Trail Management Objectives



Variety Of Resolutions Moved Forward At Virtual Legislative Summit

The ATV Minnesota annual Legislative Summit was held December 12, 2020. Two dozen board members, association lobbyists and DNR Parks & Trails partners attended the virtual meeting on Zoom. Over a period of 4 hours, they discussed, prioritized and voted on important trail funding and policy issues to move forward to the State Legislature at the appropriate time. **Here are the**

highlights:

-President Ron Potter and lobbyist Ray Bohn reviewed items passed in the last Legislative Session, and those not passed. (See a full report in the October 25th ATVMN newsletter, posted at atvam.org.)

New resolutions discussed and voted on as high priorities for ATVMN and its member clubs:

-To approve allocating \$250,000 for the development of an ATV Master Plan, to inventory current, open ATV riding areas in the State of Minnesota. Main reason: In order to strategically create a state-wide Master Plan, we first must know what ATVs can ride today. There is no public or private entity that has a complete inventory of open riding areas in Minnesota which includes all public land options.

-To increase the appropriation for ATV Grant-in-Aid funding by \$700,000. Main reason: New miles and new trail systems are being considered every year; the base grant appropriation must be adequate to cover maintenance needs and also allow the system to grow.

-To support appropriation for the Voyageur Country ATV trail system to match the bonding appropriation from the 2020 Legislative Session of \$950,000, with \$450,000 in fiscal year 2022, and \$500,000 in fiscal year 2023, from the ATV Dedicated account. Main reason: Voyageur Country ATV was awarded \$950,000 in State Bonding during the 2020 Legislative Special Session, which requires a match.

-To support an extension to the availability of appropriation in Laws 2019 of these funds until June 30, 2023.

-To continue the support, approved at the January 2020 Legislative Summit, for \$455,000 from the ATV Dedicated Account, to support Phase 2 planning, permitting & development of the Prospector ATV Club trail system.

-To approve \$500,000 funding for the Prospector ATV Club, from the ATV Dedicated Account, to be used to match IRRRB Trail Grant funding, to complete the trail between Taconite-David Dill State Trail to Babbitt Trail.

-To approve a language change to the ATV definition, to remove “low pressure or non-pneumatic” from the definition in the statutes.

Resolutions discussed and voted on as secondary priorities:

-To support legislation to open to ATVs some sections of state highways with a speed limit of 30 mph or less, in communities in order to connect trails to services.

-To support removing the Ag Zone Restriction to not be able to run in the ditches until after August 1.

-To support keeping the ability of 16-17 youths to ride with a passenger, when riding with parents and having a drivers license.

-To support providing for a reduction in the ATV registration fee for those who belong to an ATV club.

Resolutions discussed and voted on as thirdly priorities:

-To support non-profit ATV Clubs receive a sales tax exemption on all equipment and attachments as an allowable cost in the GIA manual.

-To support an opt-in option to receive information about ATVMN when registering ATVs.

Resolutions discussed, but tabled or no motion offered:

-That no new trails will be funded from the ATV account until existing trails maintenance have appropriate funding.

-That all current ATV contracts in GIA will be issued, one-time CPI adjustment of 17.3%. Future contracts shall be adjusted on a biannual bases for CPI credit. Tabled after discussion that this is part of an ongoing process to improve the GIA program.

-That upon granting an “ATV Trail Special Usage Permit” by the MN DNR, a “Minimal Trail Permit Damage Deposit Fee” shall be collected and in place prior to approval of such permit.

-That ATVMN recommend that Forest Roads, with no speed limit posted by local road authority, have a speed limit for ATV usage of 30 MPH.



ATTENTION!

All current advertisers and those interested in advertising in Minnesota Wheelin, the new and improved, official publication of ATVMN and MN4WDA:

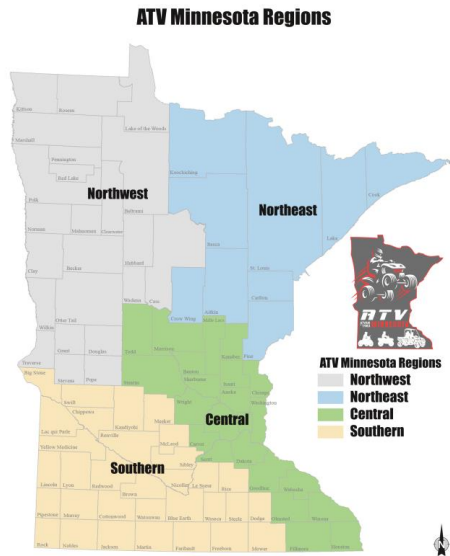
ATV Minnesota business members get a 10% discount on their ads, and another 10% if they buy a six-issue schedule in 2021. To receive a media kit and rate card, and to place ads, please contact Creston Dorothy, owner of Pro Print, the publisher of our new magazine at: cdorothy@proprintus.com, or call 218-722-9805. The Dec/Jan issue of Minnesota OffRoad is the last one published by MSPN for ATVMN. Minnesota Wheelin is moving to a calendar year, with the Jan/Feb 2021 issue arriving in the mailbox of all individual, family and business members of both State Associations in late January.

REMINDER: See the new 9-page booklet titled "Winter Riding Opportunities in Minnesota" on the ATVMN website: atvam.org . Written and distributed free by ATVMN. (Graphic by Dean Schliek)

MINNESOTA WINTER ATV TRAILS

<p>ALVWOOD - SQUAW LAKE TRAIL</p> <p>APPLETON OHV PARK</p> <p>BEMIS HILL TRAIL</p> <p>CHENGWATANA ST. FOREST</p> <p>CHISHOLM TRAIL <small>EAST RANGE TRAIL</small></p> <p>FOND DU LAC ST. FOREST</p> <p>GANDY DANCER</p> <p>GENERAL CG ANDREWS ST. FOREST</p> <p>GENOA TRAIL</p>	<p>IRON RANGE OHV REG AREA</p> <p>MATTHEW LOUREY TRAIL</p> <p>MOOSE RIVER TRAIL</p> <p>NEMADJI ST. FOREST</p> <p>SAGINAW GRADE TRAIL</p> <p>ST. CROIX ST. FOREST</p> <p>SOO LINE <small>NORTH/SOUTH CARLTON COUNTY</small></p> <p>WARROAD/ROSEAU TRAIL</p> <p>SPIDER LAKE TRAIL</p>
---	--

! BE SURE TO ALWAYS CHECK THE MINNESOTA DNR WEBSITE FOR CLOSURES.

ATV MINNESOTA

"Your Voice To Ride"

Dedicated Volunteers
Building Fun & Sustainable ATV
Trails
For The Riding Public

Invite friends and family to join
today!

See the mailing label on your ATV
Minnesota magazine for the renewal date of
your membership. Be sure to include your
email address on the renewal form to
receive newsletters. And send renewals to

ATVMN's mailing address: PO Box 300, Stacy, MN 55079

Belonging to ATV Minnesota, you join thousands of riders throughout the state, have fun, and help create a positive future of ATV riding in Minnesota.

As a family or individual member for just \$20 you receive:

- A subscription to Minnesota Wheelin magazine (6 issues per year)
- Twice monthly newsletter by email with the latest news and information

- Membership card and bumper sticker
- Invitation to events, including our Legislative Summit and Vision Meeting in the spring, and the ATV Minnesota Ride & Rally in the fall, as well as general membership meetings
- Discounts with many of our business members
- A full-time lobbyist at the State Capitol, helping create pro-ATV legislation, and moving forward important bills that help provide funding for new trail systems

As a business member, for \$75 you receive:

All of the above, plus:

- Your business name, address, phone number, email address and website listed in Minnesota Wheelin magazine and on the ATV Minnesota website
- Discounts on advertising in Minnesota Wheelin
- An official ATV Minnesota membership certificate for display in your business

To join, contact **ATVAM** or call (800) 442-8826.

ATVAM

Follow us for all the latest news!



ATV Association of Minnesota
PO Box 300, Stacy, MN 55079
800-442-8826
atvamoffice@atvam.org
www.atvam.org

Connect with us



ATVAM | PO Box 300, Stacy, MN 55079

[Unsubscribe ervin@whitepineriders.com](mailto:ervin@whitepineriders.com)

[Update Profile](#) | [About our service provider](#)

Sent by atvamoffice@atvam.org powered by



[Try email marketing for free today!](#)